



Aurora Quickturn

Contract Engineering

&

Precision Manufacturing Services

Quickturn prototyping thru production of precision custom fabricated mechanical parts. Services include Swiss lathe, CNC, laser tube cutting, water jet and finishing. Additive 3D metal & plastic printing services.



ENGINEERING/DESIGN SERVICES

Full product design

Material/process analytics

Mechanical design & DFM Analysis

CAPABILITIES

Swiss lathe—20 mm—32 mm rod diameter

CNC lathe machining centers

Vertical machining centers

Multitasking turning centers

Water jet cutting center

Wire EDM, hole sinker & hole popper

Laser tube cutter (dry) up to 10mm diameter

3D metal and plastic printing centers

Blasting & deburring

CMM Vision and optical comparator systems

EtO sterilization

Compression and torsion dynamic testing

Assembly services

Test and measurement services

MATERIALS

Titanium, molybdenum, nitinol, tungsten, and other refractory materials

Stainless steel, steel, copper, brass, aluminum, plastics

FINISHING

Anodizing, chemical film, electroplate

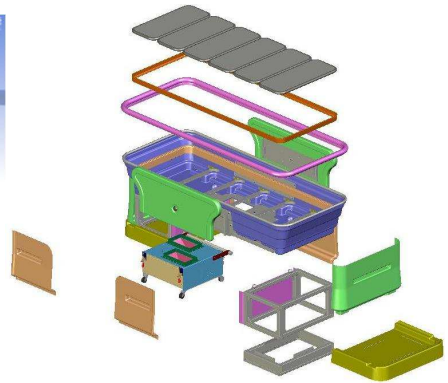
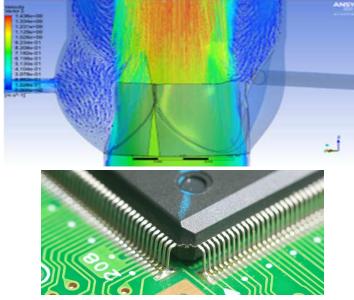
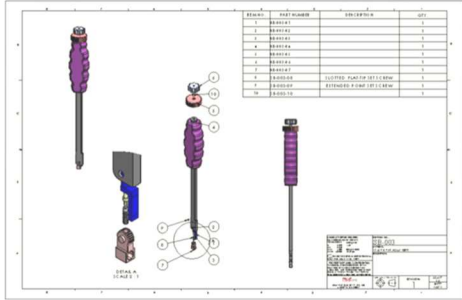


All production is done at our facility in Marietta, GA.

1755 West Oak Parkway ▪ Suite 100 ▪ Marietta ▪ GA ▪ 30062 ▪ (470) 280-4080

www.AuroraQT.com

Engineering Design Services



Swiss Lathe



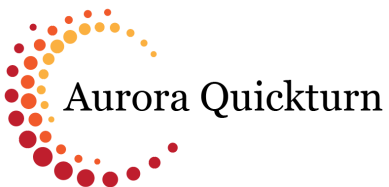
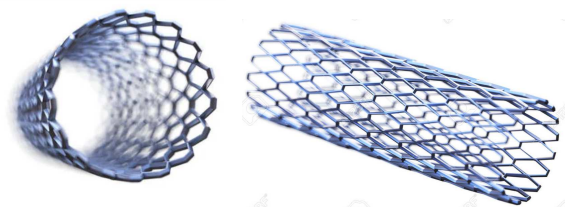
CNC Milling



Wire EDM



Metal Tube Cutting



Contract Engineering & Precision Manufacturing Services

1755 West Oak Pkwy ▪ Suite 100 ▪ Marietta ▪ GA ▪ 30062

(470) 280-4080 www.Aurora.com